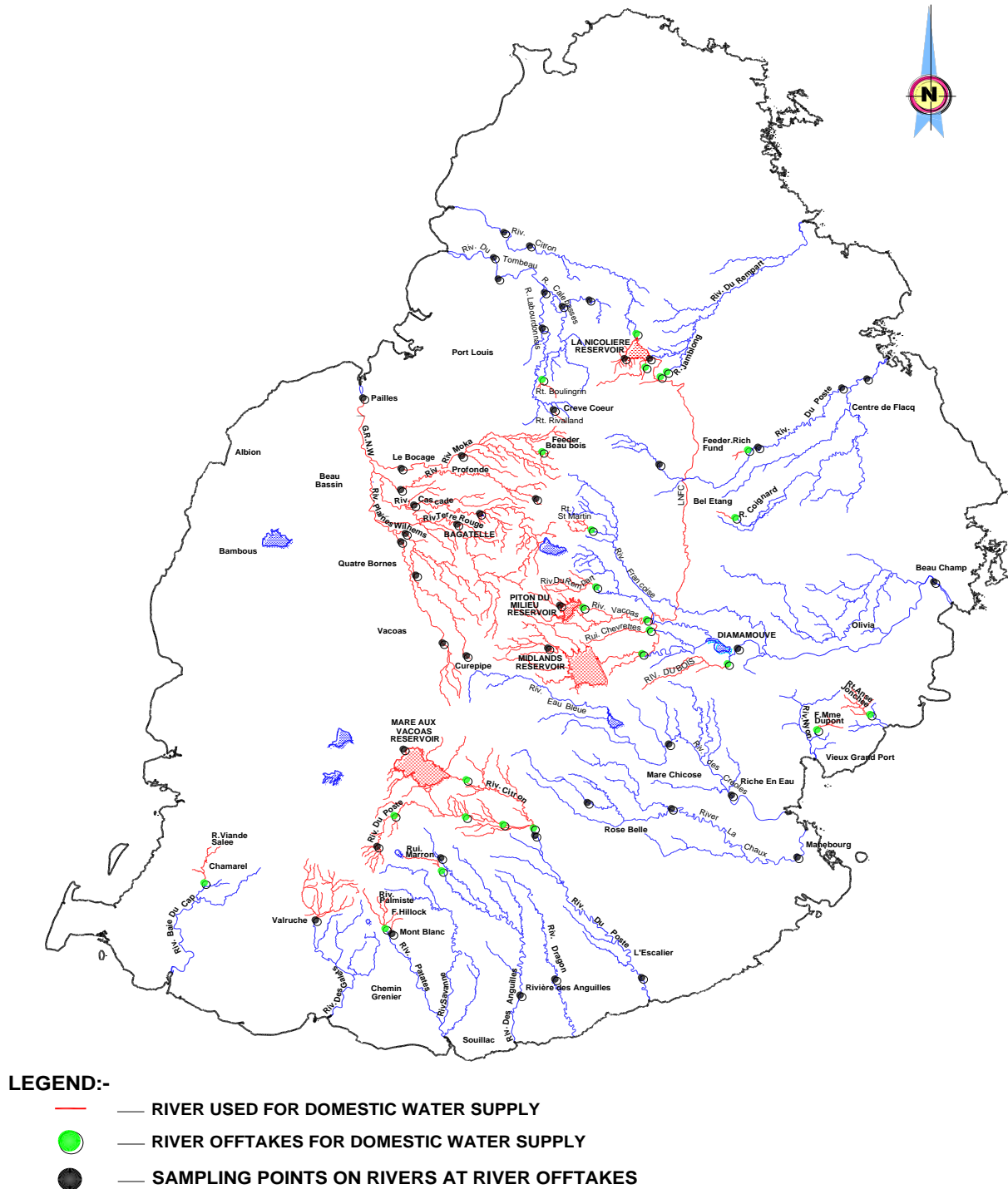
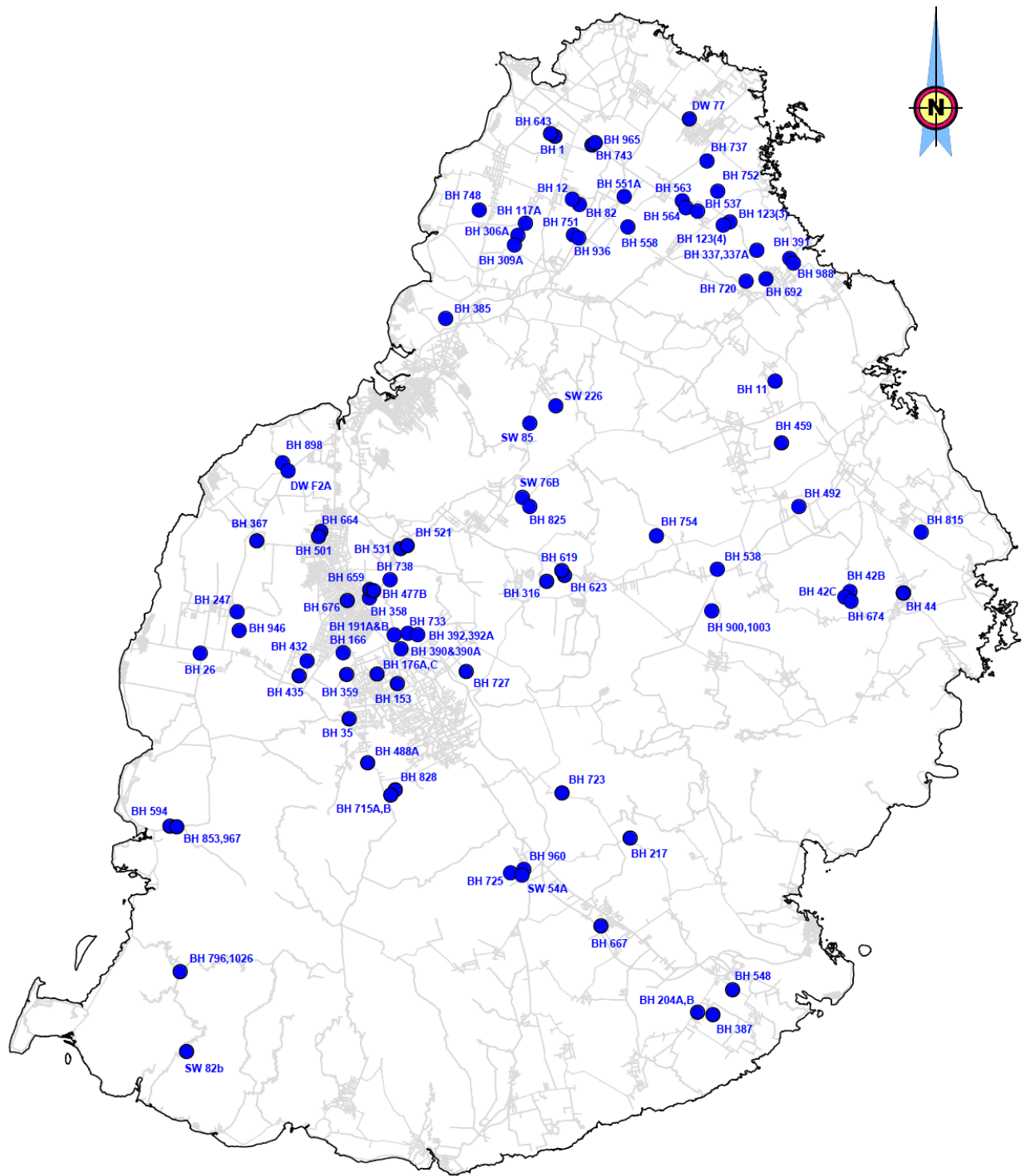


## DATA ON WATER QUALITY

The quality of surface water and groundwater for domestic use is regularly monitored over the island by Water Resources Unit and Central Water Authority. Sampling exercises are carried out at points on rivers and at boreholes as depicted in Fig. 6.1 and Fig. 6.2 respectively.



**Fig. 6.1 – Location of Sampling points on rivers.**



**LEGEND**

● — SAMPLING POINTS AT BOREHOLES

**Fig. 6.2 – Location of Sampling points at boreholes.**

## SAMPLING POINTS ON RIVERS

RIVER	SAMPLING POINT
SECHE	FLOREAL
	TRIANON behind Margarine
	PHOENIX Mauritius Breweries
MESNIL	CUREPIPE
	VALENTINA
	MESNIL
PLAINES WILHEMS	TRIANON near Margarine
	BELLE ROSE Cinema ABC
MOKA	SOUILLAC BRIDGE near Le Bocage
	ROSELYN COTTAGE
TERRE ROUGE	CINQ ARPENTS
PROFONDE	ALMA
	REDUIT
CASCADE	CAMP AUGUSTE
	REDUIT
	VERDUN neat CMT
CITRON	POWDER MILLS
	SSRN pt of discharge
LABOURDONNAIS	CREVE COEUR BRIDGE
	BAILLACHE BRIDGE
	CALEBASSE DAM
DU TOMBEAU	BOIS MARCHAND
	ARSENAL BRIDGE
CALEBASSES	ILOT BRIDGE
	CALEBASSE DAM
LA CHAUX	BALISSON
	ASTROEA BRIDGE
	BEAU VALLON DAM
	ROSE BELLE near Alcodis
DES CREOLES	LE VAL
	DAM before RICHE EN EAU SE
	CAMP JARDIN VILLE NOIR
DU POSTE	INLET TO TREATMENT PLANT
	DOWNSTREAM TO MAURIFARMS
GRNW	PAILLES
DU POSTE DE FLACQ	CAMP THOREL
	ROCHE DAM
	CAMP POORUN
	CHEVREAUX BRIDGE
GRSE	LA CHARTREUSE
	SANS SOUCI
	DEEP RIVER BEAU CHAMP BRIDGE

## SAMPLING POINTS AT BOREHOLES

REGION	BH NO	NAME
NORTH	1 , 643	MON CHOISY (FOND DU SAC)
	12	PLAINE DES PAPAYES
	82	BELLE VUE MAURICIA
	306 A, 309 A, 117A	MORCELLEMENT ST ANDRE
	563 , 564	COTTAGE
	SW226	CAMP LA BOUE
	SW85 B/D	BASSIN LOULOU
	743 , 965	FOND DU SAC
	751 , 936	LA LOUISA
	123(3) , 123(4), 752	POUDRE D'OR
	391 , 988	HAUTE RIVE
	551A	LABOURDONNAIS
	737	BEAU PLATEAUX
	748	SOLITUDE
	558	MAPOU
	DW77	MAPOU LECLEZIO
	385	RICHE TERRE
	537	L'ESPERANCE TREBUCHET
	720	MON LOISIR
	337, 337A	SHOENFELD
PLAINE WILHEMS	432A/B , 435	BASSIN
	358A/B	ST JEAN
	166 A/E	SOLFERINO (CANDOS)
	432	PALMA
	359	SOLFERINO (DOOKUN)
	35	HOLYROOD BH
	488A/C	MONTEE DU FIL
	825 , SW 76B	BEAU BOIS
	191A/B	PETIT CAMP
	477, 659	EBENE
	176A/C	CLAIRFOND
	664	BARKLY
	619, 623	BONNE VEINE
	153A/D	ST PAUL
	715B, 828	BEARD
	727	CAMP FOUQUEREAUX
	501	SERGE ALFRED
	676	PAVILLON
	392A/B	HIGHLANDS
	390A/B, 733	VALENTINA
EAST	316	ALMA
	11A	LAVENTURE
	459 , 459A	CONSTANCE
	421	BELLE ROSE CLEMENCIA
	44	BEL AIR CAROLINE
	538	BEL ETANG
	900, 1003	PETIT PAQUET
	521 , 531	TELFAIR
	754	CAMP THOREL
	492A/B	BONNE MERE
	815	CAMP ITHIER
	42B/C,674	BELLE ROSE CLEMENCIA
WEST	247A/B, 946	EAU BONNE
	26	PALMYRE
	594B/C, 853, 967	YEMEN
	367A/B	ST MARTIN

	898, DW F2A	PETITE RIVIERE TANGARA
<b>SOUTH</b>	SW82B	CHOISY
	217A/C	CLUNNY
	548A/B	PLAISANCE
	204A/B	TROIS BOUTIQUES
	667	GEBERT ROAD
	54A, 725, 960	NEW NOUVELLE FRANCE
	387	CAFÉ
	796, 1026	CHAMAREL
	723	BANANE

### Variation in Water Quality

Tables 6.1 and 6.2 give the range of values obtained from the various chemical analysis of groundwater and river water.

PARAMETER	Groundwater	WHO Standards for drinking water
pH	6.0 - 8.4	6.5-8.5
Conductivity ( $\mu$ S/cm)	140 - 500	-
Turbidity (NTU)	0.1 - 2.0	5.0
Nitrate as N (mg/l)	1.0 -5.0	-
Nitrite as N (mg/l)	0.001 - 0.03	0.1
Phosphate (mg/l)	0.1 - 1.8	2.2
Ammonia as N (mg/l)	0.01 - 0. 1	-
COD (mg/l)	< 3	-
TDS (mg/l)	70 - 250	1000
Sulphate (mg/l)	2 - 30	-
Chloride (mg/l)	15 - 50	-

**Table 6.1 Variation in Groundwater Quality**

Source: CWA

PARAMETER	River Water	WHO Standards For drinking water
pH	6.5 - 8.2	6.5-8.5
Conductivity ( $\mu$ S/cm)	140 - 400	-
Turbidity (NTU)	1.0 - 6.0	5.0
Nitrate as N (mg/l)	0.4 - 5.0	-
Nitrite as N (mg/l)	< 0.006	0.1
Phosphate (mg/l)	0.01 - 0.6	2.2
Ammonia as N (mg/l)	0.01 - 0.2	-
COD (mg/l)	< 3 - 15	-
TDS (mg/l)	70 - 200	1000

**Table 6.2 Variation in River Water Quality**

Source: CWA