

PITON DU MILIEU RESERVOIR		
FEEDERS		SCHEMATIC DIAGRAM
NATURAL STREAMS	River Bateau	
	River Vacoas	

History Notes

Piton du Milieu Reservoir is situated in the district of Moka. It is fed mainly from River Vacoas and Bateau. It serves water for domestic use in the East District Water Supply system.

Salient features of Piton du Milieu Reservoir

<i>Location</i>	: Piton du Milieu in Moka district, about 20 kms South East of Port Louis
<i>Year of Construction</i>	: 1952
<i>Catchment Area</i>	: 6.30 km ²
<i>Mean Annual Rainfall</i>	: 3529 mm
<i>Feeders</i>	: River Vacoas River Bateau Seasonal Streams
<i>Regulated Annual Yield</i>	: 8.3 Mm ³
<i>Reservoir Capacity</i>	: 2.99 Mm ³ after hydrographic survey of 1996
<i>Dead Storage</i>	: 0.10 Mm ³
<i>Full Reservoir Level</i>	: 438 m (amsl)
<i>Type of Dam</i>	: Earth dam
<i>Maximum height of dam</i>	: 13.5 m (above foundation level)
<i>Length of Dam</i>	: 836.16 m
<i>Type of spillway</i>	: Ungated concrete crest wall
<i>With of Spillway</i>	: 363.12 m (2 spillways)
<i>Purpose</i>	: Domestic Water Supply

PITON DU MILIEU RESERVOIR

DAILY STORAGE VARIATION

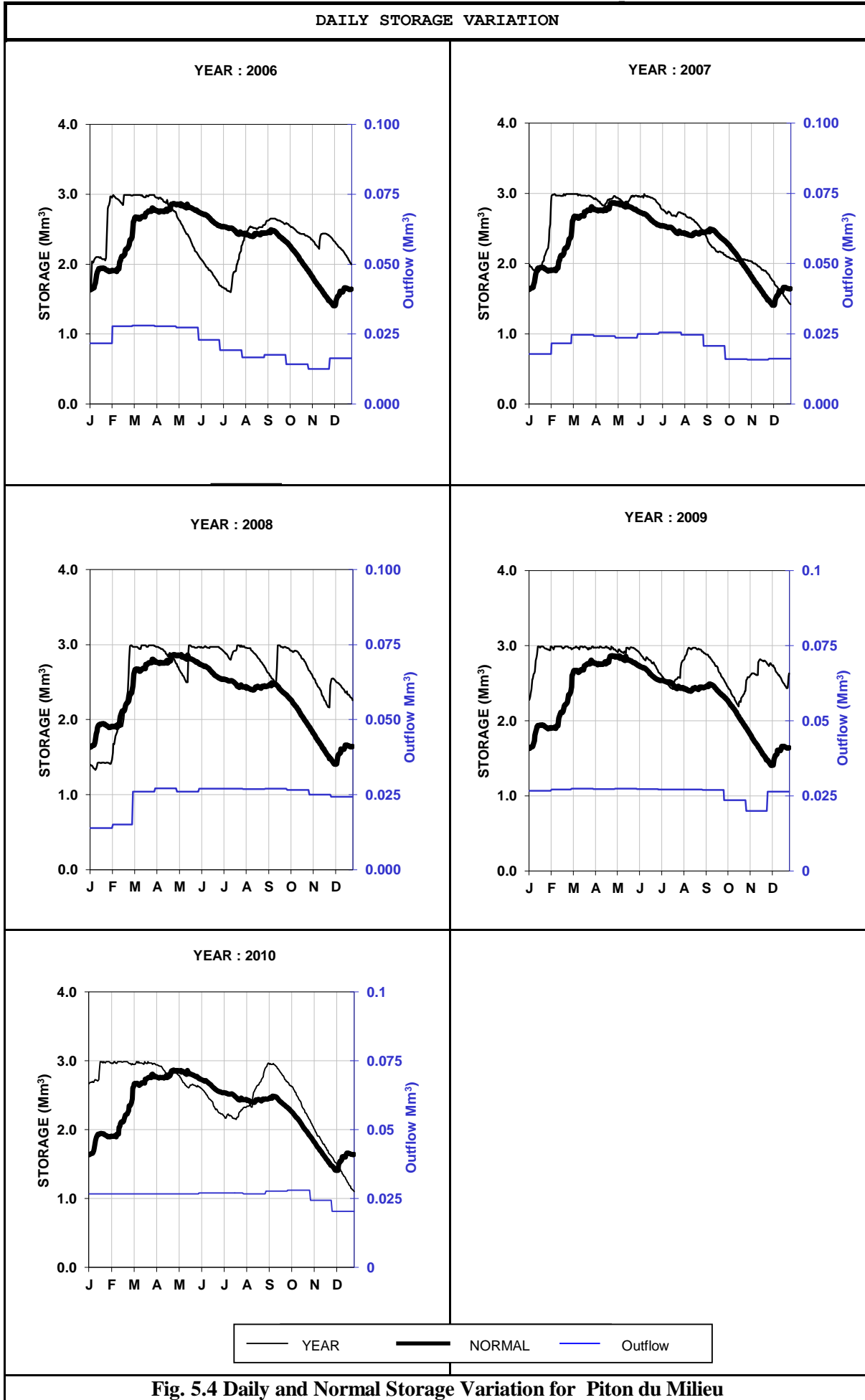


Fig. 5.4 Daily and Normal Storage Variation for Piton du Milieu