

MARE LONGUE RESERVOIR		
FEEDERS		SCHEMATIC DIAGRAM
<b>NATURAL STREAMS:</b>	Riv.Des Aigrettes :  FEEDER No. 1  FEEDER No. 2  FEEDER No. 3	

### History Notes

Mare Longue Reservoir was constructed in the year 1948. Located in the district of Plaine Wilhems, about 30 kms South West of Port Louis. It receives water from three feeders, the main one being River des Aigrettes.

The storage water is used for hydro power generation at Tamarind and Magenta power stations and thereafter for irrigation.

### Salient features of Mare Longue Reservoir

<i>Location</i>	: Mare Longue, in the district of Plaines Wilhems about 30 kms South West of Port Louis
<i>Year of Construction</i>	: 1948
<i>Catchment Area</i>	: 6.53 km <sup>2</sup>
<i>Mean Annual Rainfall</i>	: 2980 mm
<i>Annual Regulated Yield</i>	: 9.7 Mm <sup>3</sup>
<i>Reservoir Capacity</i>	: 6.28 Mm <sup>3</sup>
<i>Full Reservoir Level</i>	: 576.91 m amsl
<i>Feeders</i>	: River des Aigrettes feeder1; feeder 2; feeder 3
<i>Type of Dam</i>	: Homogeneous earthen embankment
<i>Maximum height of dam</i>	: 13 m
<i>Length of Dam</i>	: 768 m
<i>Type of spillway</i>	: Ungated semi circular concrete crest slab
<i>Width of Spillway</i>	: Circumferential length - 152.4 m Downstream channel - 11.35 m
<i>Purpose</i>	: Hydropower generation at Tamarind and Magenta power stations and thereafter for irrigation

# MARE LONGUE RESERVOIR

## DAILY STORAGE VARIATION

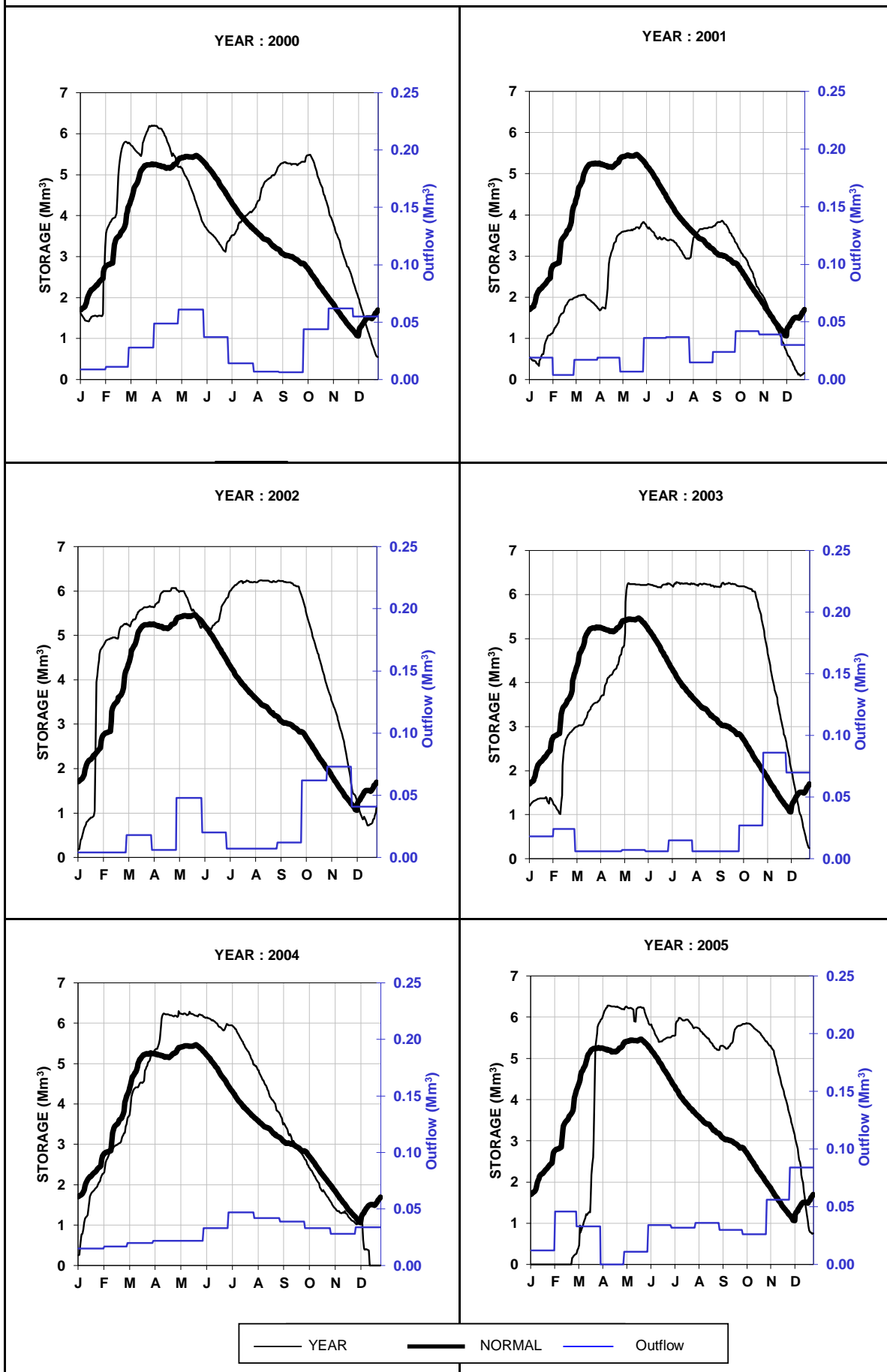


Fig. 5.6 Daily and Normal Storage Variation for Mare Longue