

LA FERME RESERVOIR				
FEEDERS				SCHEMATIC DIAGRAM
NATURAL STREAMS : River Belle Isle				
FEEDERS CANALS	LENGTH (Km)	RIVER	DESIGN CAPACITY m ³ /s	
Trianon Grosses Roches	8.0	Plaines Wilhems	2.40	
La Fenetre	4.5	Rempart (west) & Papayes	2.83	

History Notes

Constructed in 1914, with the sole purpose to supply water for irrigation to the western coast of the island. It is located in the district of Black River near Bambous village and about 15 kms South West of Port Louis.

Salient features of La Ferme Reservoir

<i>Location</i>	:	Near Bambous village in the Black River district about 15 kms South West of Port Louis.		
<i>Year of Construction</i>	:	1914		
<i>Catchment Area</i>	:	19.61 km ²		
<i>Mean Annual Rainfall</i>	:	1380 mm		
<i>Feeders</i>	:	(i) Trianon Grosses Roches Feeder Canal. (ii) La Fenêtre Feeder Canal		
<i>Annual Regulated Yield</i>	:	17 Mm ³		
<i>Reservoir Capacity</i>	:	11.52 Mm ³ after hydrographic survey of 1996		
<i>Dead Storage</i>	:	0.2 Mm ³		
<i>Full Reservoir Level</i>	:	146.0 m (amsl)		
<i>Type of Dam</i>	:	Earth cum masonry		
<i>Maximum height of dam</i>	:	(i) above ground level	- Earth dam	= 8 m
			Masonry dam	= 8.62 m
		(ii) above foundation level	- Earth dam	= 10 m
			Masonry dam	= 12.1 m
<i>Length of Dam</i>	:	1526.54 m		
<i>Type of spillway</i>	:	Ungated masonry with concrete hearting		
<i>Width of Spillway</i>	:	145.26 m		
<i>Purpose</i>	:	Irrigation		

LA FERME RESERVOIR

DAILY STORAGE VARIATION

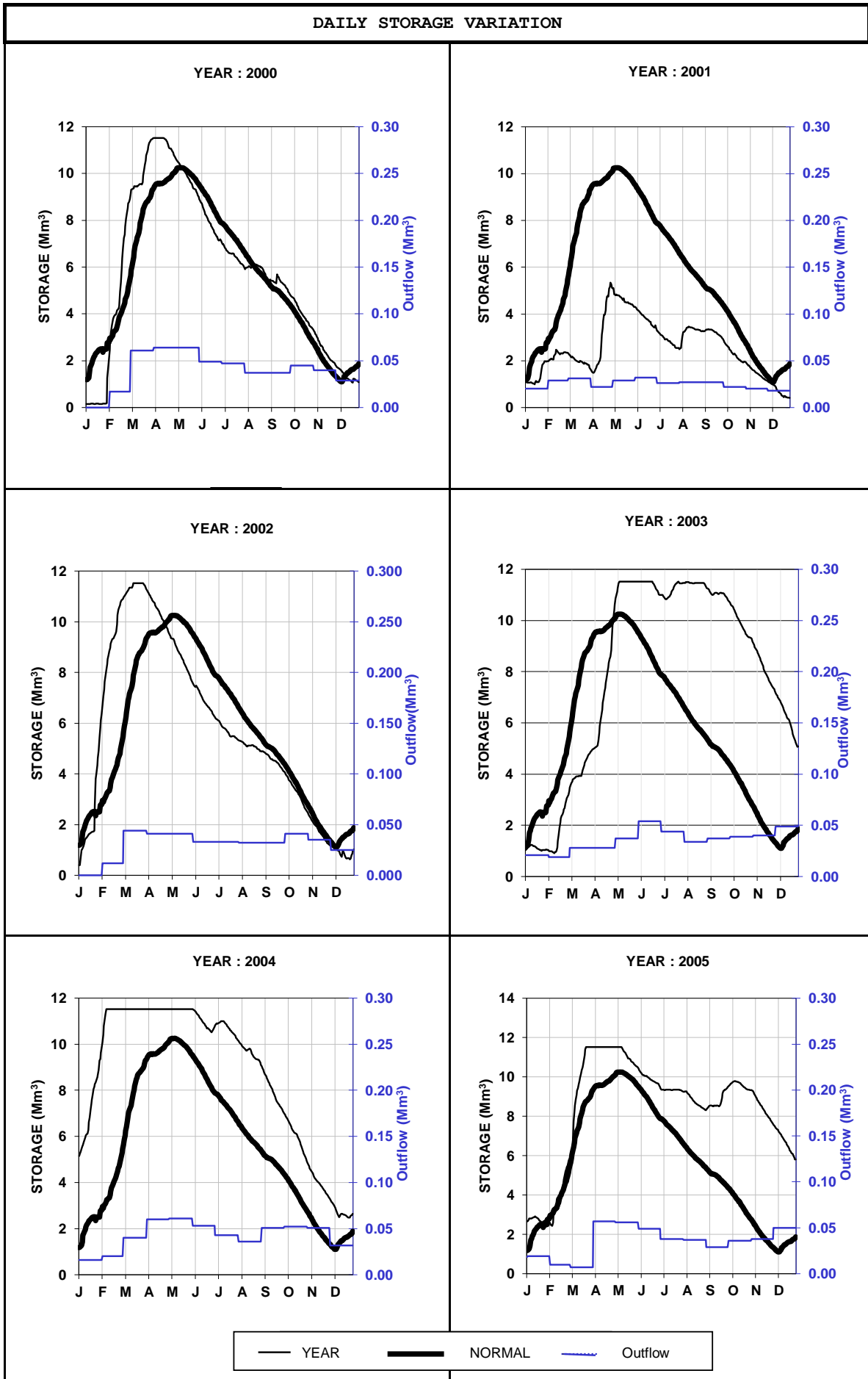


Fig. 5.5 Daily and Normal Storage Variation for La Ferme